



Plan your trip

transitmaps.unc.edu

UNC's Commuter Alternative Program (CAP) is a free rewards program for employees and students who do not drive alone to campus, but choose a more sustainable transportation option instead.

CAP Benefits

- Free rides for emergencies
- Free weeknight parking promo codes
- Free occasional-use parking permit
Valid in S11 zone or Park-and-Ride lots
- Monthly prize drawings
- Discount card to local businesses
- Eligible commuters may receive:
 - Free bus pass*
 - Vanpool discount
 - Emergency ride home

* Must live outside the Chapel Hill Transit service area.

CAP Eligibility

Open to UNC students and employees who:

- Live off campus and commute to UNC
- Forgo an on-campus daytime parking permit



Register for CAP!

Scan QR code to register online for bus, bike, walk, carpool, or vanpool!

cap.unc.edu • cap@unc.edu

Chapel Hill Transit

Serves UNC, Chapel Hill, and Carrboro, open to the public, and fare-free for all!

chtransit.org

GoTriangle

Serves the Triangle area. Service is fare-free through June 2024.

gotriangle.org

Popular Destinations	Bus Stop from UNC <small>See all bus stops at triangle.transloc.com</small>	Bus Routes
Carrboro Farmers' Market	Health Sciences Library <small>S. Columbia St.</small>	CW
Carr Mill Mall / Carrboro*	Health Sciences Library <small>S. Columbia St.</small>	CW, F, J
Eastgate Shopping Center*	Franklin St <small>Carolina Coffee Shop</small>	CL
Meadowmont Village*	Fetzer Gym <small>South Rd.</small>	N
University Place*	Fetzer Gym <small>South Rd.</small>	A, F
Carolina North Forest	UNC Hospitals <small>Manning Dr.</small>	HS, NS, T
Durham Bulls Athletic Park & DPAC	UNC Hospitals <small>Manning Dr.</small>	400, 405
Duke University	Morehead Planetarium <small>Franklin St.</small>	400, 405
Southpoint Mall	Fetzer Gym <small>South Rd.</small>	800
NC State University & Meredith College	Fetzer Gym <small>South Rd.</small>	CRX, or 800 transfer to 100
Amtrak <small>(near Durham Station)</small>	UNC Hospitals <small>Manning Dr.</small>	400, 405
Megabus / Greyhound <small>(at Durham Station)</small>	UNC Hospitals <small>Manning Dr.</small>	400, 405
RDU Airport	Fetzer Gym <small>South Rd.</small>	800 transfer to RDU Shuttle or 100

* Grocery store nearby

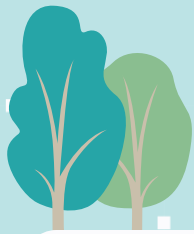
See buses in real-time!

Visit move.unc.edu/transit for local and regional bus tracking options.

CAREFREE
at **UNC**
how to get around without a car
move.unc.edu



FINANCE AND OPERATIONS
Transportation and Parking



Bike - move.unc.edu/bike

UNC is a bicycle-friendly university! Bikes are allowed on all roads and brick paths. Bike racks can be found around campus and repair stations are near the Pit.

Register your bike online to:

- Get a free permit (required at UNC)
- Help police find lost or stolen bikes
- Get a 50% off coupon for a U-lock



Bike Share - move.unc.edu/bikeshare

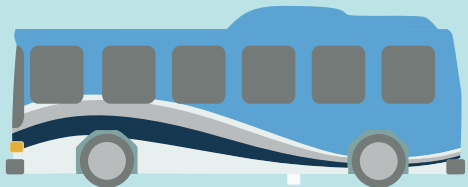
Tar Heel Bikes, located across campus can be used by anyone.

- **Reserve** with the Spin mobile app
- **Release** the locking spin
- **Ride** anywhere on campus
- **Return** by parking the bike at any designated corral or bike rack
(See map in the Spin app or website)

Pricing Options:

Pay-As-You-Go: \$1 unlock fee + 0.29 per minute.

Monthly Pass Pricing: \$6.99 flat monthly rate, unlock fee waived + \$0.29 per minute.



Bus - move.unc.edu/transit

UNC's Point-to-Point (P2P) - p2p.unc.edu

- Free for UNC students and employees
- P2P Express runs 7 nights a week
- P2P shuttles serve RR lot, RDU, libraries, and campus health (accessibility vans available)

Chapel Hill Transit - chtransit.org

- Fare-free service to Chapel Hill and Carrboro
- U and RU routes circulate campus

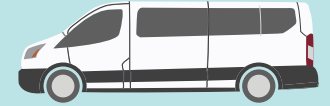
GoTriangle - gotriangle.org

- Connects Chapel Hill to Durham, Raleigh, Hillsborough, and other parts of the Triangle

PART Route 4* - partnc.org/route4

- Connects Chapel Hill to Mebane, Graham, Burlington, and Greensboro

* Free bus pass from CAP - see reverse side for eligibility



Rideshare - move.unc.edu/rideshare

Carpool - move.unc.edu/carpool

- Free, secure online ridematching!
- Share costs of driving, gas, and parking.

Vanpool - move.unc.edu/vanpool

- Enterprise and PART provide vanpools to UNC Monday through Friday
- Monthly fares* include gas and parking.

* CAP discount available - see reverse side for eligibility

Zipcar - move.unc.edu/carshare

- Reserve a Zipcar online at age 18+. Zipcars are located around campus.
- Hourly rates include gas and insurance. Annual membership required.



Park-and-Ride - move.unc.edu/pr

UNC commuters may park in designated lots to ride the bus to campus. See website for maps and more details.

Ride Chapel Hill Transit fare-free:

- **Annual** Park-and-Ride permits may be purchased through CAP.
- **Weekly and daily** Park-and-Ride permits are available for purchase.

Ride GoTriangle and PART:

Free Park-and-Ride lots are offered for regional commuters. UNC CAP members can ride free with a bus pass - see reverse side for eligibility requirements.

Breaks - move.unc.edu/breaks

To get to RDU Airport:

- Sign up for a free P2P shuttle for Fall, Thanksgiving, and Spring Breaks
- Take GoTriangle route 800 to RDU shuttle

To get to Durham Station:

Take GoTriangle route 400 or 405 to connect to Amtrak, Megabus, and Greyhound

Carpool anywhere with Share the Ride NC!



Transportation and Parking Office

Public Safety Bldg., 285 Manning Dr.
(919) 843-9598 or cap@unc.edu

